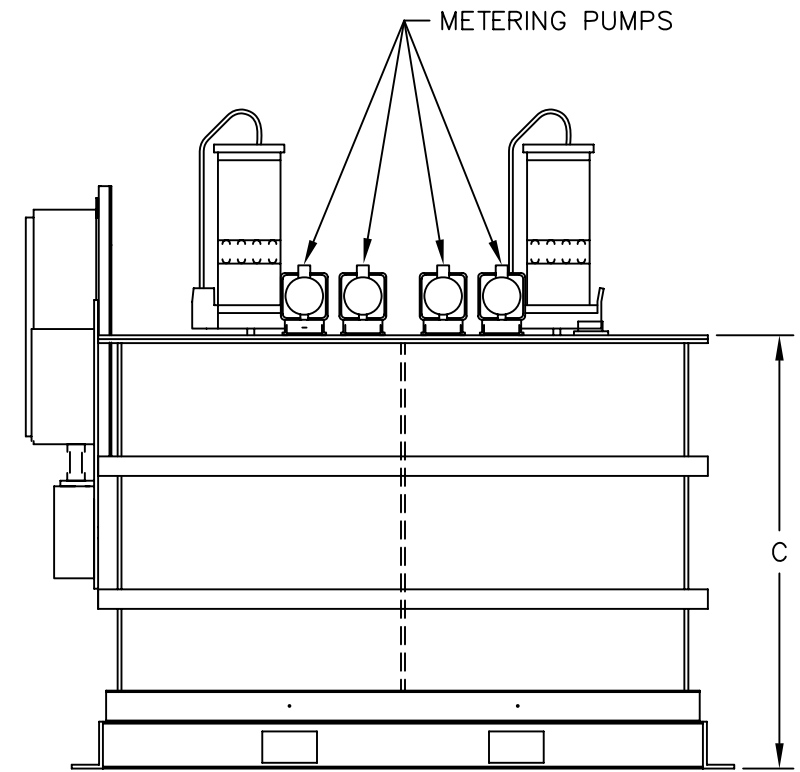
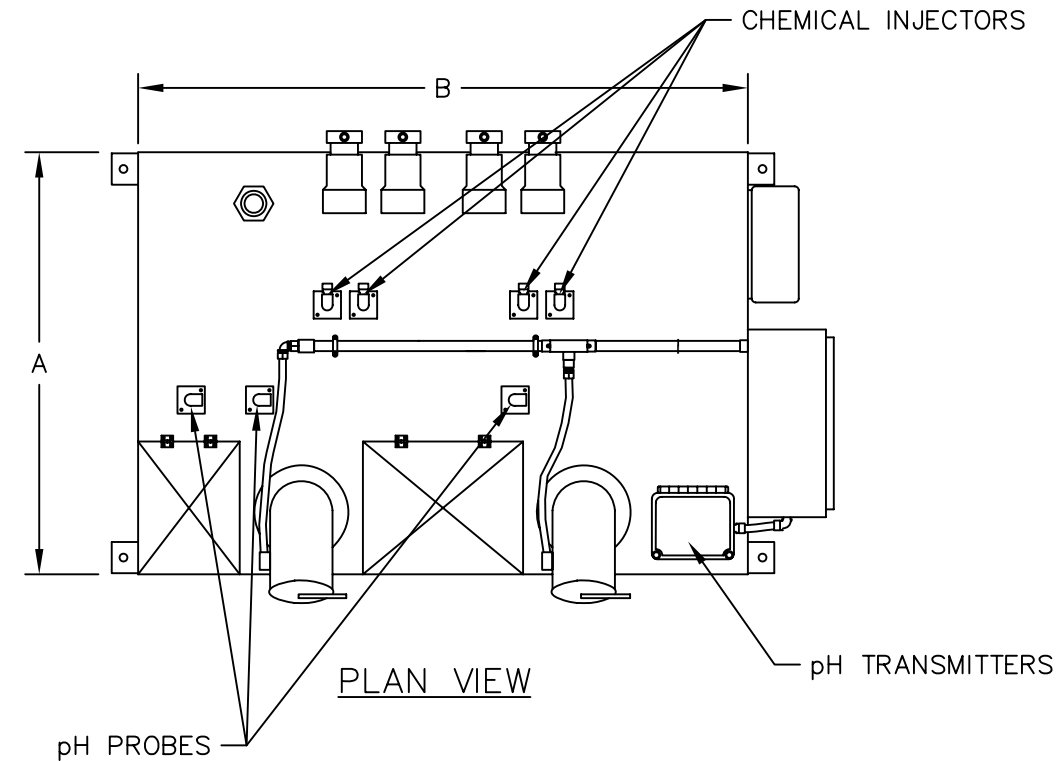
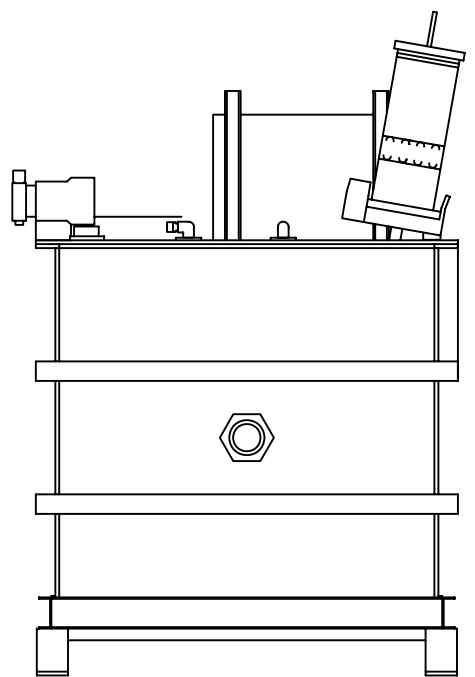


MODEL #	FLOWRATE (GPM)	WIDTH (DIM A)	LENGTH (DIM B)	HEIGHT (DIM C)	MATERIAL
NS-5-2	5	2'-6"	4'-6"	3'-0"	POLYPROPYLENE
NS-10-2	10	3'-6"	4'-6"	3'-0"	POLYPROPYLENE
NS-20-2	20	3'-6"	6'-6"	4'-6"	POLYPROPYLENE
NS-30-2	30	4'-6"	6'-6"	4'-6"	POLYPROPYLENE
NS-50-2	50	4'-6"	8'-6"	5'-6"	POLYPROPYLENE
NS-75-2	75	5'-6"	8'-6"	6'-6"	POLYPROPYLENE
NS-100-2	100	5'-6"	10'-6"	6'-6"	POLYPROPYLENE

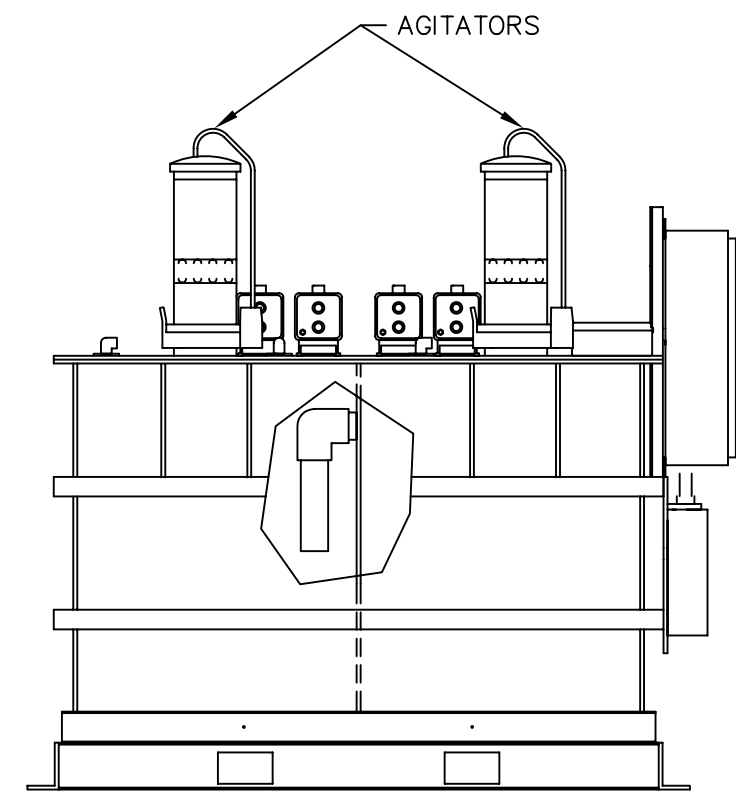
- STANDARD ELECTRICAL POWER IS 208 VAC 3 $\phi$ .
- CONTACT FACTORY FOR LARGER SYSTEMS.



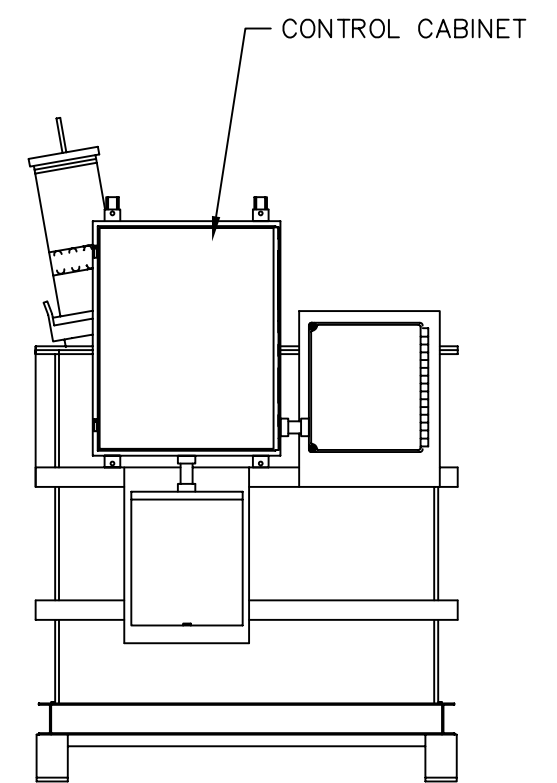
REAR ELEVATION



LEFT ELEVATION



FRONT ELEVATION



RIGHT ELEVATION

pH NEUTRALIZATION SYSTEM  
DUAL CHAMBER

[www.TSI-LLC.us](http://www.TSI-LLC.us)

**TSI** TOTAL SYSTEMS INTERNATIONAL, LLC  
 1256 Bretmoor Way  
 San Jose, CA 95129  
 USA  
 Phone: 1-408-996-0447  
 Facsimile: 1-408-996-9480

EQUIPMENT CUT SHEET			
TWO CHAMBER NEUTRALIZATION SYSTEM			
PROPRIETARY INFORMATION: This document may not be used or copied without prior written permission of TSI			
FILENAME: TSI NS-2 CUT	DATE: 12-16-1999	DRAWN BY: DP	CHECKED BY:
DRAWING NUMBER: NS-2 CUT	SCALE: NONE	SIZE: D	SHEET 1 OF 1