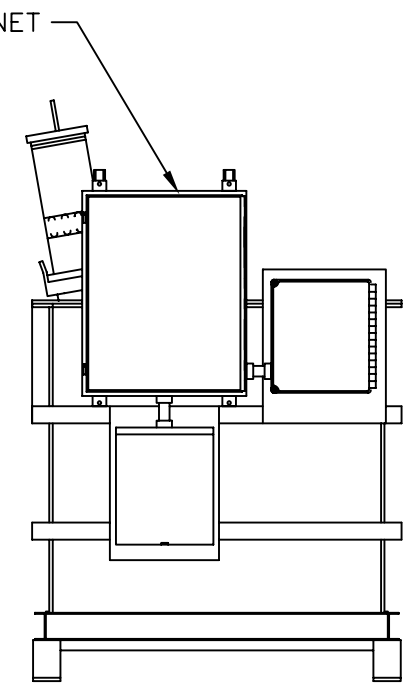
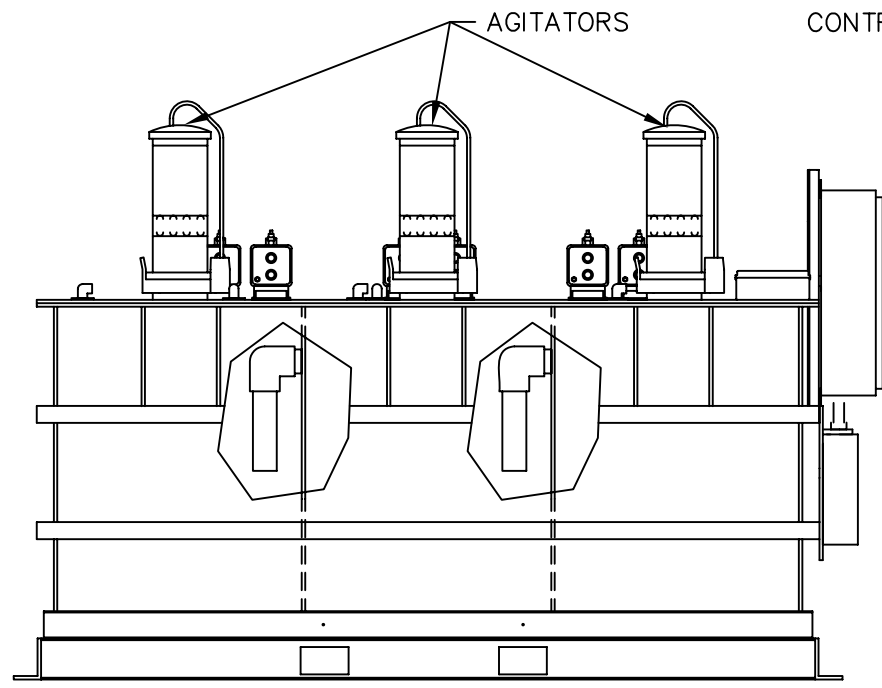
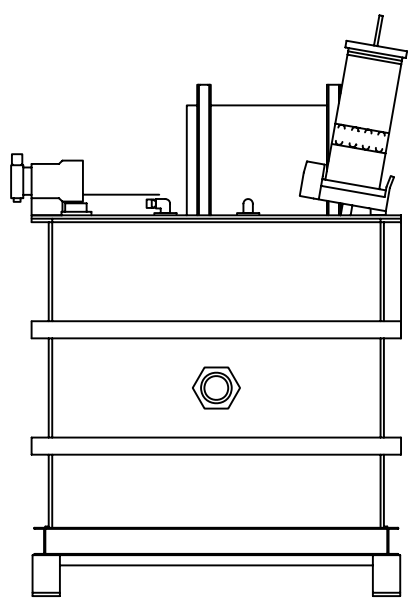
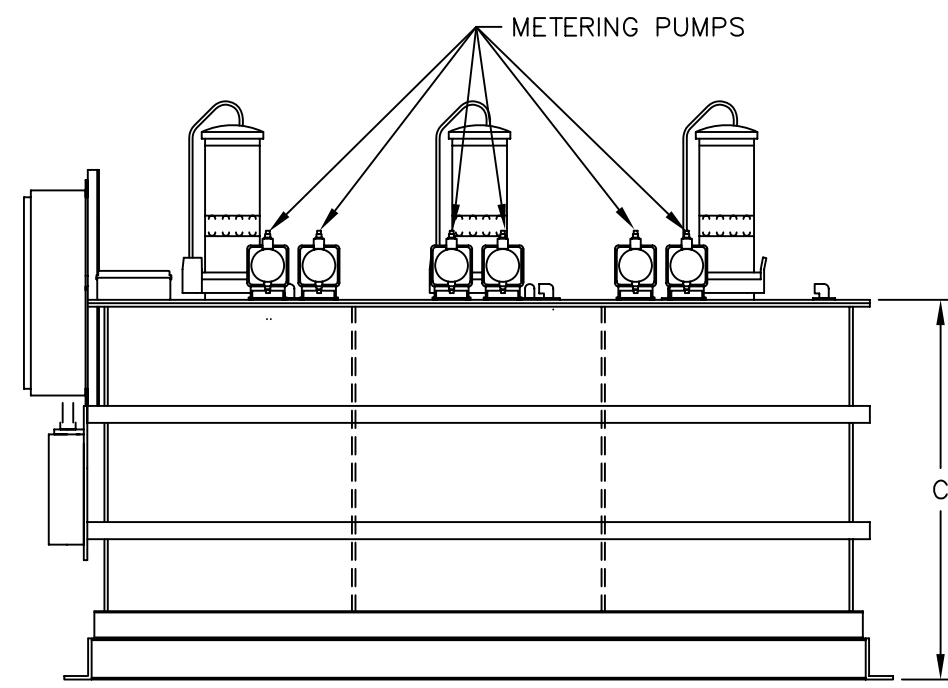
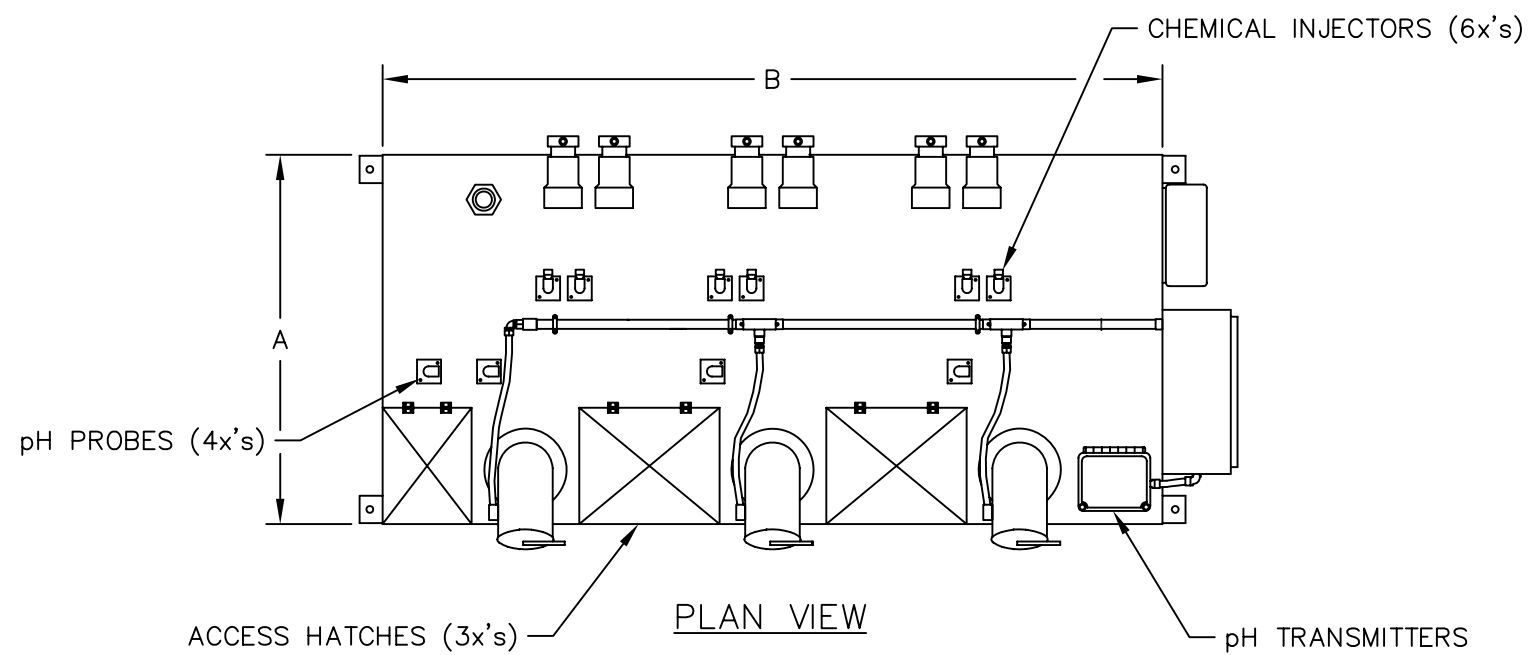


MODEL #	FLOWRATE (GPM)	WIDTH (DIM A)	LENGTH (DIM B)	HEIGHT (DIM C)	MATERIAL
NS-5-3	5	2'-6"	5'-6"	3'-0"	POLYPROPYLENE
NS-10-3	10	3'-6"	5'-6"	3'-0"	POLYPROPYLENE
NS-20-3	20	4'-6"	6'-6"	4'-6"	POLYPROPYLENE
NS-30-3	30	4'-6"	8'-6"	4'-6"	POLYPROPYLENE
NS-50-3	50	4'-6"	10'-6"	6'-6"	POLYPROPYLENE
NS-75-3	75	5'-6"	10'-6"	7'-6"	POLYPROPYLENE

- STANDARD ELECTRICAL POWER IS 208 VAC 3 ϕ .
- CONTACT FACTORY FOR LARGER SYSTEMS.



pH NEUTRALIZATION SYSTEM
THREE CHAMBER

www.TSI-LLC.us

TSI TOTAL SYSTEMS INTERNATIONAL, LLC
 1256 Bretmoor Way
 San Jose, CA 95129
 USA
 Phone: 1-408-996-0447
 Facsimile: 1-408-996-9480

EQUIPMENT CUT SHEET			
THREE CHAMBER NEUTRALIZATION SYSTEM			
PROPRIETARY INFORMATION: This document may not be used or copied without prior written permission of TSI			
FILENAME: TSI NS-3 CUT	DATE: 12-16-1999	DRAWN BY: DP	CHECKED BY:
DRAWING NUMBER: NS-3 CUT	SCALE: NONE	SIZE: D	SHEET 1 OF 1